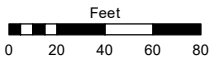


(#5392)
NORTH VALLEY ESTATES
UNIT 2 - PHASE 2
PORTION OF SE¼ SECTION 33
T21N - R19E

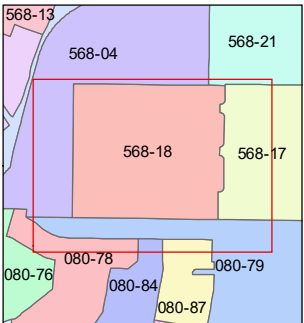
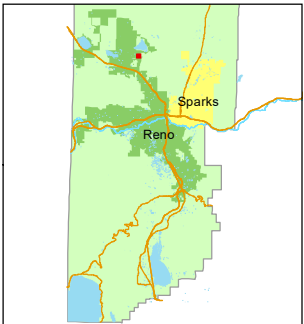
Assessor's Map Number

568-18

STATE OF NEVADA
WASHOE COUNTY
ASSESSOR'S OFFICE
1001 East Ninth Street, Building D
Reno, Nevada 89512
(775) 328-2231



1 inch = 80 feet



created by: SR 11/18/2019

updated: SR 11/09/20

area previously shown on map(s):

568-04

NOTE: This map was prepared for the use of the Washoe County Assessor for assessment and illustrative purposes only. It does not represent a survey of the premises. No liability is assumed as to the sufficiency or accuracy of the data delineated hereon.